

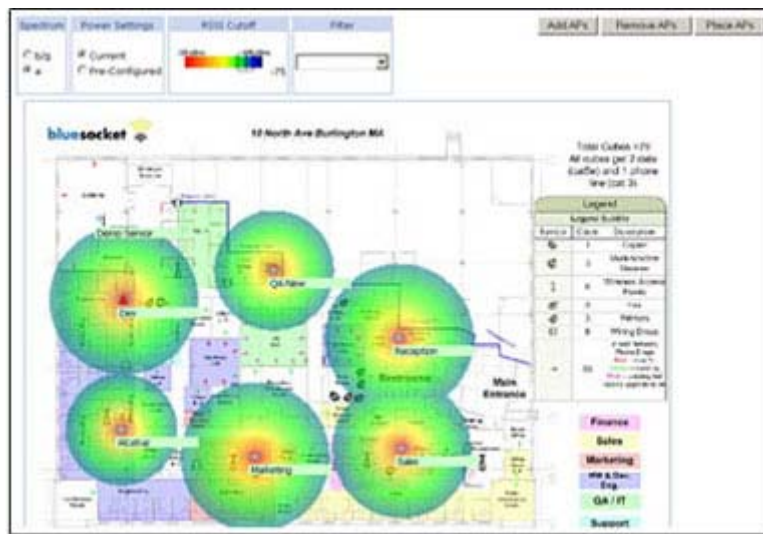
WLAN Management

Bluesocket Management Software

Bluesocket's Management Software simplifies WLAN management by providing true centralized configuration and maintenance, policy-management, and monitoring capabilities. WLAN Management software is integrated into the vWLAN appliance and the BlueView Management System (BVMS)

Management Software Features and Benefits

- **Central Management** - Eliminates the labor-intensive task of configuring multiple devices deployed in multiple locations by enabling you to provision, configure, and manage all of your WLAN deployments remotely from a central location.
- **Schedule and Automate Maintenance Tasks** - Automate device maintenance and provisioning tasks such as backing up and restoring configurations, pushing out policy or configuration changes, upgrading system software, and installing software patches.
- **Email Notifications** - Informs the administrator of an event in the wireless network. Eliminates the need to sit in front of a management console and watch for status - instead the administrator is emailed whenever a critical alert occurs.
- **Powerful Reporting** - Allows administrators to create detailed inventory, user, login and users over time reports.
- **RF Intrusion Prevention** - Functionality includes the ability to detect and block rogue access points, ad-hoc users, and alert administrators to RF hacker attacks.
- **Location & Coverage Maps** - BlueView allows administrators to create location and coverage maps by importing floor plans and locating Access Points and Sensors on the map. Administrators can graphically visualize WLAN coverage on the actual floor plan and see power, channel, RSSI and AP user loads in real-time.



Bluesocket's management software enables you to determine the location of rogue access points, users and attackers and graphically represents RF coverage.